

INDOOR AIR QUALITY PRODUCTS



www.fasthvacrparts.com

FAST® Parts – International Comfort Products

TABLE OF CONTENTS

FILTER HOUSINGS FOR GAS FURNACES

FHG SeriesPage 4

FILTER HOUSINGS FOR AIR HANDLERS

FHE Series.....Page 5

FILTER HOUSINGS FOR GAS FURNACES OR AIR HANDLERS

FB series - 180°Page 6

MEDIA AIR CLEANERS

FSMU series.....Page 7

FHG*-7M* seriesPage 8

FB*-M* series - 180°Page 9

MAIC series - Multi-position.....Page 10

FPRAM2000 - Right Angle.....Page 11

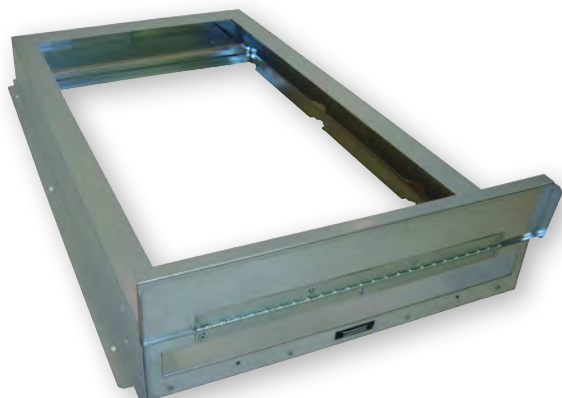
ELECTRONIC AIR CLEANERS

EAIC Series.....Page 12

HUMIDIFIERS

HMIC series.....Page 13-15

FILTER HOUSING FOR GAS FURNACES



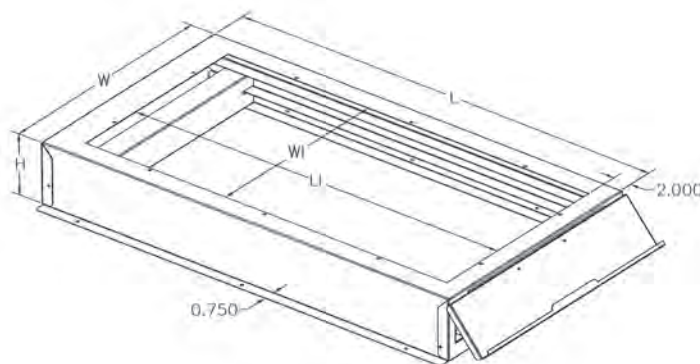
The Air-Tite Series Filter Housings offer the most well-built, sleek designed and easiest to use galvanized sheet metal filter housings on the market, for residential and light commercial use. It allows for easy access to furnace filters—no panels or door to remove. The housing is made to fit all gas furnaces through 5 tons and makes a clean and professional installation. Uses standard size pleated or panel filters.

STANDARD FEATURES:

- Fully hinged door with magnetic latch and integrated handle provide a tight seal, eliminating air and debris from entering the filter box from surrounding area.
- Removable rails are easy to change to accommodate different filter sizes.
- Heavy 22 gauge galvanized sheet metal has been die cut for smooth edges.
- Solid one piece wrap cabinet design is spot welded and riveted for sturdiness and long life.
- Tabs have rounded corners, which lessens chances of damage in transit or installation injury.
- Mounting holes are provided for faster installation.
- Individually boxed for convenient shipping and warehousing.
- Limited Lifetime Warranty.

AIR-TITE HOUSING FOR 1" FILTERS

PART NO.	OUTSIDE DIMENSIONS			OPENING		FILTER SIZE
	W	H	L	W1	L1	
FHG1425-2	15 3/8	3	28 1/2	12 5/8	25 1/4	14 x 25
FHG1625-2	17 3/8	3	28 1/2	14 5/8	25 1/4	16 x 25
FHG2025-2	21 3/8	3	28 1/2	18 5/8	25 1/4	20 x 25
FHG2424-2	25 3/8	3	28 1/2	22 5/8	25 1/4	24 x 24
FHG3025-2	31 3/8	3	28 1/2	28 5/8	25 1/4	30 x 25



AIR-TITE HOUSING FOR 1" OR 2" FILTERS

PART NO.	OUTSIDE DIMENSIONS			OPENING		FILTER SIZE
	W	H	L	W1	L1	
FHG1425-3	15 3/8	4	28 1/2	12 5/8	25 1/4	14 x 25
FHG1625-3	17 3/8	4	28 1/2	14 5/8	25 1/4	16 x 25
FHG2025-3	21 3/8	4	28 1/2	18 5/8	25 1/4	20 x 25
FHG2424-3	25 3/8	4	28 1/2	22 5/8	25 1/4	24 x 24
FHG3025-3	31 3/8	4	28 1/2	28 5/8	25 1/4	30 x 25

AIR-TITE HOUSING FOR 1", 2" OR 4" FILTERS

PART NO.	OUTSIDE DIMENSIONS			OPENING		FILTER SIZE
	W	H	L	W1	L1	
FHG1425-6	15 3/8	6	28 1/2	12 5/8	25 1/4	14 x 25
FHG1625-6	17 3/8	6	28 1/2	14 5/8	25 1/4	16 x 25
FHG2025-6	21 3/8	6	28 1/2	18 5/8	25 1/4	20 x 25
FHG2424-6	25 3/8	6	28 1/2	22 5/8	25 1/4	24 x 24
FHG3025-6	31 3/8	6	28 1/2	28 5/8	25 1/4	30 x 25

FILTER HOUSING FOR AIR HANDLERS

The Air-Tite Series Filter Housings offer the most well-built, sleek designed and easiest to use galvanized sheet metal filter housings on the market, for residential and light commercial use. It allows for easy access to furnace filters - no panels or door to remove. The housing is made to fit all electric air handlers through 5 tons and makes a clean and professional installation. Uses standard size pleated or panel filters.

AIR-TITE HOUSING FOR 1" FILTERS

PART NO.	OUTSIDE DIMENSIONS			OPENING		FILTER SIZE
	W	H	L	W1	L1	
FHE1420-2	15 3/8	3	22	12 5/8	18 3/4	14 x 20
FHE1620-2	17 3/8	3	22	14 5/8	18 3/4	16 x 20
FHE2020-2	21 3/8	3	22	18 5/8	18 3/4	20 x 20
FHE2025-2	26 3/8	3	22	23 5/8	18 3/4	20 x 25
FHE2025-2N	21 3/8	3	25	18 5/8	21 3/4	20 x 25

AIR-TITE HOUSING FOR 1" OR 2" FILTERS

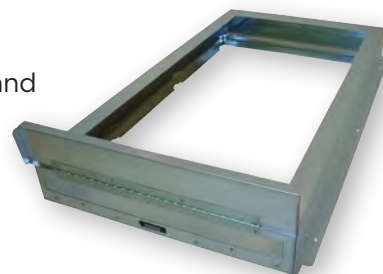
PART NO.	OUTSIDE DIMENSIONS			OPENING		FILTER SIZE
	W	H	L	W1	L1	
FHE1420-3	15 3/8	4	22	12 5/8	18 3/4	14 x 20
FHE1620-3	17 3/8	4	22	14 5/8	18 3/4	16 x 20
FHE2020-3	21 3/8	4	22	18 5/8	18 3/4	20 x 20
FHE2020-3T	23 1/2	4	22	19 3/4	18 3/4	20 x 20
FHE2025-3	26 3/8	4	22	23 5/8	18 3/4	20 x 25
FHE2025-3N	21 3/8	4	25	18 5/8	21 3/4	20 x 25

AIR-TITE HOUSING FOR 5" MERV 11 MEDIA FILTERS

PART NO.	OUTSIDE DIMENSIONS			OPENING		FILTER SIZE	REPLACEMENT FILTER
	W	H	L	W1	L1		
FHE1420-7	15 3/8	7 3/8	22 1/8	12 7/8	18	14 x 22	MAH-1056A
FHE1620-7	17 3/8	7 3/8	22 1/8	14 5/8	18	15 7/16 x 21 15/16	MFAH-S
FHE2020-7	21 5/8	7 3/8	22 1/8	18 7/8	18	19 3/4 x 22	MAH1056B
FHE2025-7	26 5/8	7 3/8	22 1/8	23 7/8	18	20 1/4 x 25 3/8	M81056
FHE2025-7N	21 5/8	7 3/8	25 1/8	18 7/8	21 3/8	20 1/4 x 25 3/8	M81056
FHE2224-7	23 3/8	7 3/8	24 1/8	20 5/8	20	21 1/8 x 24	MFAH-L

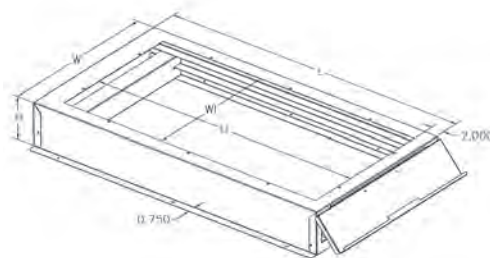
STANDARD FEATURES:

- Fully hinged door with magnetic latch and integrated handle provide a tight seal, eliminating air and debris from entering the filter box from surrounding area.
- Removable rails are easy to change to accommodate different filter sizes.
- Heavy 22 gauge galvanized sheet metal has been die cut for smooth edges.
- Solid one piece wrap cabinet design is spot welded and riveted for sturdiness and long life.
- Tabs have rounded corners, which lessens chances of damage in transit or installation injury.
- Mounting holes are provided for faster installation.
- Individually boxed for convenient shipping and warehousing.
- Limited Lifetime Warranty.



AIR-TITE HOUSING FOR 1", 2" OR 4" FILTERS

PART NO.	OUTSIDE DIMENSIONS			OPENING		FILTER SIZE
	W	H	L	W1	L1	
FHE1420-6	15 3/8	6	22	12 5/8	18 3/4	14 x 20
FHE1620-6	17 3/8	6	22	14 5/8	18 3/4	16 x 20
FHE2020-6	21 3/8	6	22	18 5/8	18 3/4	20 x 20
FHE2020-6T	23 1/2	6	22	19 3/4	18 3/4	20 x 20
FHE2025-6	26 3/8	6	22	23 5/8	18 3/4	20 x 25
FHE2025-6N	21 3/8	6	25	18 5/8	21 3/4	20 x 25



FILTER HOUSING FOR GAS FURNACES & AIR HANDLERS

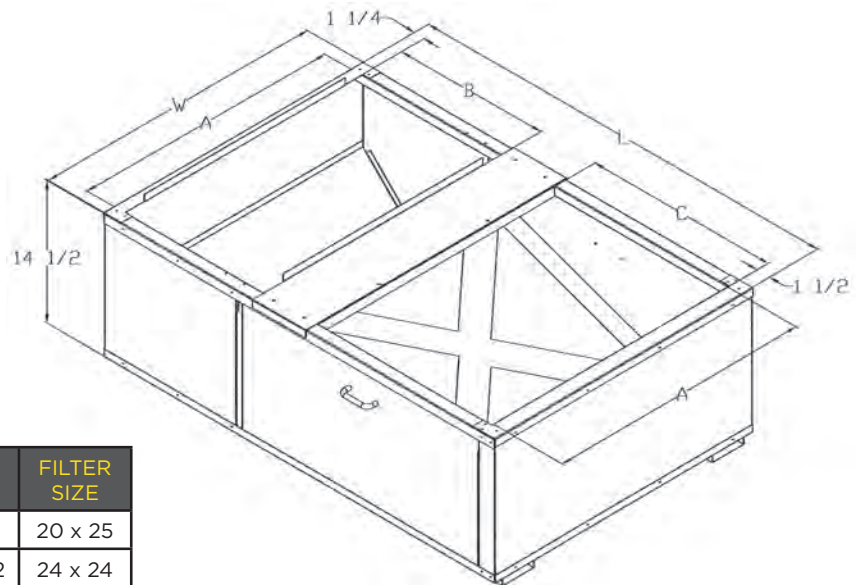
The Perfect-Platform Series Filter Housings offer the most well-built, sleek designed and easiest to use galvanized sheet metal filter housings on the market, for residential and light commercial use. The space saving design for vertical installations, keeps unit off floor eliminating need for wooden platform, thereby reducing installation time and costs.

The Filter Housing allows for easy access to filters without having to enter furnace. The Filter Housing uses 1", 2" or 4" standard size pleated or panel filters which are positioned on an angle to maximize surface area. They are made to fit 1 - 3.5 ton electric air handlers or gas furnaces.



STANDARD FEATURES:

- Two, pull-out doors with handle allow filter access from either side.
- Adjustable inlet duct opening replaces need for field forming transition, significantly reducing installation time.
- Removable rails are easy to change to accommodate different filter sizes.
- Heavy gauge galvanized sheet metal has been die cut for smooth edges.
- Solid one piece wrap cabinet design is spot welded and riveted for sturdiness and long life.
- Individually boxed for convenient shipping and warehousing.
- Limited Lifetime Warranty.



PART NO.	W	L	A	B	C	FILTER SIZE
FB2832	28 1/2	32	26 1/2	8	13 1/2	20 x 25
FB2843	28 1/2	43	26 1/2	10/12	19/22 1/2	24 x 24
FB2232	28 1/2	32	20 1/2	9 1/2	14 1/2	20 x 20
FB2240	28 1/2	40	20 1/2	12	20	20 x 25

MEDIA RETROFIT AIR CLEANERS

- The FAST® High Efficiency Charged-Media Retrofit Air Cleaner has been designed to remove atmospheric and household dust, coal dust, insecticide dust, mites, pollen, mold spores, fungi, bacteria, pet dander, cooking smoke and grease, tobacco smoke particles, and more down to 0.3 micron (1/84,000 of an inch).
- Ideal for homes with allergy, asthma or respiratory sufferers, smokers, pets and mustiness.
- Helps protect and prolong the operating efficiency of the heating and cooling equipment.



STANDARD FEATURES:

- High Efficiency MERV 11 Media Filter, rated at 492 feet/minute.
- Filter material is constructed of continuous hydrophobic polyolefin fibers that will not shred or absorb moisture. They are cellulose free and will not sustain mold growth.
- Unique filter design features a structured density gradient with an electret charge for higher initial and sustained efficiency over the life of the filter.
- Extra deep, 5 1/4 inch filter contains more media material than other filters on the market.
- Perfect fit filter has an exact fit with the cabinet. Does not contain foam, sponge or fiberglass filler.
- User-friendly, easy-to-change filter cartridge means no fussing with complicated combs or brackets.
- Filter lasts up to one year in standard applications
- Reversible air flow. Mounts in any position.

CABINET CONSTRUCTION FEATURES:

- Heavy gauge galvanized steel cabinet resists corrosion and provides trouble-free vertical or horizontal installation.
- Durable powder coat paint finish on door resists corrosion.

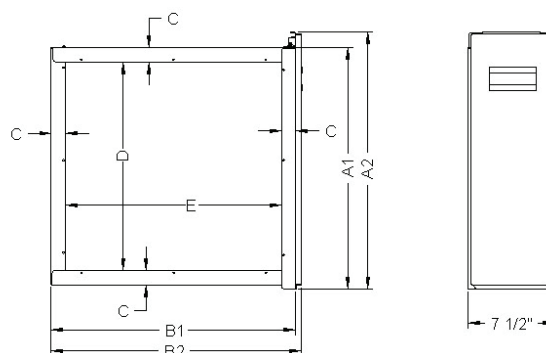
MEDIA REPLACEMENT FILTERS:

- Replacement filters are packaged 3 per box.
 FSMU1620AN replace with Part M01056
 FSMU1625AN replace with Part M1-1056
 FSMU2020AN replace with Part M21056
 FSMU2025AN replace with Part M81056

WARRANTY:

- Limited Lifetime Warranty (not including filter).

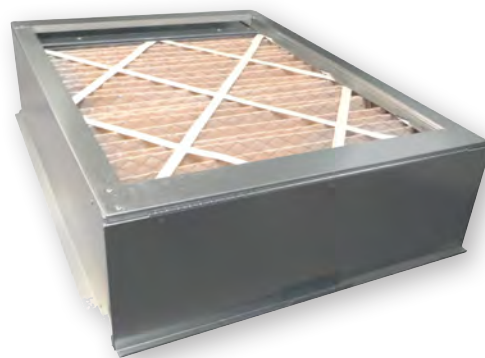
PART NO.	DIMENSIONS - IN (CM)						
	A1	A2	B1	B2	C	D	E
FSMU1620AN	15.94	17.41	23.18	23.7	1.25	13.12	20.68
FSMU1625AN	15.94	17.41	26.11	26.64	1.0	13.62	24.11
FSMU2020AN	20.83	22.3	21.21	21.74	1.25	18.0	18.71
FSMU2025AN	20.83	22.3	25.76	26.29	1.25	18.0	23.26



FILTER HOUSING MEDIA AIR CLEANERS FOR GAS FURNACES

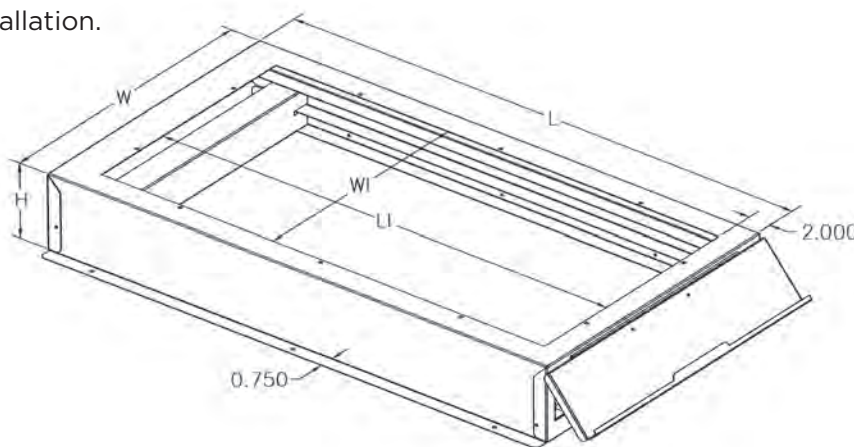
The Air-Tite Series Filter Housing Media Air Cleaners offer the most well-built, sleek designed and easiest to use galvanized sheet metal filter housings on the market, for residential and light commercial use.

- Allows for easy access to furnace filters—no panels or door to remove.
- Made to fit gas upflow furnaces.
- Makes a clean and professional installation.
- High efficiency MERV 11 Media Filter is an extra deep, 5 inch, 24 pleat filter which contains more media material than other filters on the market. More surface area means more collection area, longer filter life and lower static pressure. Filter lasts up to one year.



STANDARD FEATURES:

- Fully hinged door with magnetic latch and integrated handle provide a tight seal, eliminating air and debris from entering the filter box from surrounding area.
- Heavy 22 gauge galvanized sheet metal has smooth edges allowing for a smooth installation.
- Solid cabinet design for sturdiness and long life.
- Tabs have rounded corners.
- Mounting holes are provided for faster installation.
- Individually boxed for convenient shipping and warehousing.
- Limited Lifetime Warranty.



PART NO.	OUTSIDE DIMENSIONS			OPENING		FILTER SIZE	REPLACEMENT FILTER
	W	H	L	WI	LI		
FHG1425-7M1*	17 3/8	7 3/8	28 1/2	12 5/8	24 3/8	16 x 25	M1-1056
FHG1625-7M1	17 3/8	7 3/8	28 1/2	14 5/8	24 3/8	16 x 25	M1-1056
FHG2025-7M8	21 5/8	7 3/8	28 1/2	18 7/8	24 3/8	20 x 25	M81056

*Use for 14 inch wide furnace only

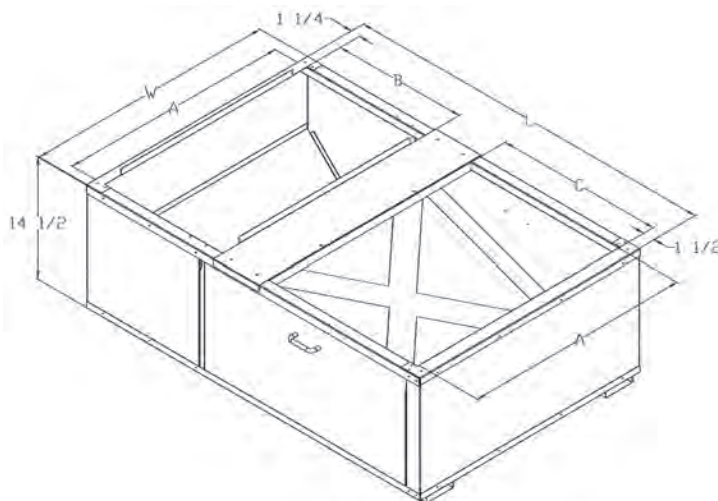
MEDIA AIR CLEANER PLATFORMS FOR GAS FURNACES & AIR HANDLERS

The Perfect-Platform Series Media Air Cleaner offers the most well-built, sleek designed and easiest to use galvanized sheet metal filter housings on the market, for residential and light commercial use. The space saving design for vertical installations, keeps furnace off the floor allowing a cleaner, more professional installation. The platform helps eliminate the possibility of dust, pet hair, insects, rodents, water or sewer backup from entering the furnace. The platform also allows the filter to work at maximum efficiency by eliminating the need for transitions, deflectors or turning vanes, thereby saving installation time and costs.



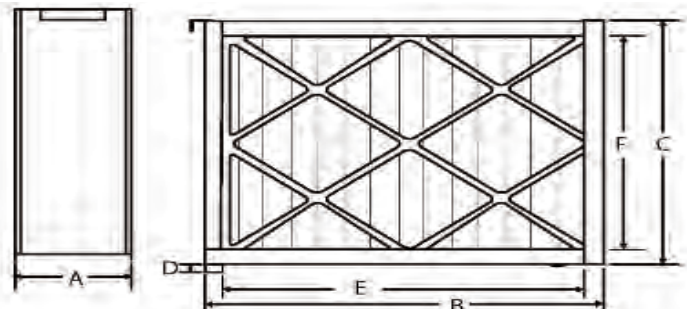
STANDARD FEATURES:

- High efficiency MERV 11 Media Filter is an extra deep, 5 inch, 24 pleat filter which contains more media material than other filters on the market. More surface area means more collection area, longer filter life and lower static pressure. Filter lasts up to one year.
- Two pull-out doors with handles allow filter access from both sides.
- Adjustable inlet duct opening replaces need for field forming transition, significantly reducing installation time.
- Heavy 22 gauge galvanized sheet metal has been die cut for smooth edges, allowing for a smoother installation.
- Individually boxed for convenient shipping and warehousing.
- Limited Lifetime Warranty.



PART NO.	W	L	A	B	C	FILTER SIZE	REPLACEMENT FILTER
FB2832-M8	28 1/2	32	26 1/2	8	13 1/2	20 x 25	M81056
FB2843-M8	28 1/2	43	26 1/2	10/12	19/22 1/2	20 x 25	M81056
FB2232-M2	28 1/2	32	20 1/2	9 1/2	14 1/2	20 x 20	M21056
FB2240-M8	28 1/2	40	20 1/2	12	20	20 x 25	M81056
FB2223-M8	28 1/2	33	-	-	-	20 x 25	M81056
FB2839-M8	28 1/2	39	-	-	-	20 x 25	M81056

MEDIA AIR CLEANER



The MAIC Media Air Cleaner cleans the air of dust, pollen, and smoke which helps keep homes cleaner and fresher longer. The FLIC filters' Minimum Efficiency Reporting Value (MERV) is specified by ASHRAE Standard 52.2. It is based on lab tests to determine the filters' ability to trap particles. MERVs for residential filters will typically be in the range of MERV 1-10. The higher the value, the more efficient the filter. MERV 8 filters have a minimum of 70% particle collection efficiency in the 3-10 micron particle size range. (Human hair is approximately 50-100 microns in diameter.) Each filter rating is MERV 8.

MAIC FEATURES:

- **EASY FILTER ACCESS:** Using the MAIC air cleaner allows the homeowners easy filter access. They will no longer have to go inside the furnace to access or change the filter.
- **IMPROVED INDOOR AIR QUALITY (IAQ):** When using the high efficiency FLIC filter, the MAIC media cabinet provides homeowners with improved air quality.
- **TROUBLE FREE INSTALLATION:** No electricity is required.
- **NEARLY MAINTENANCE FREE OPERATION:** The only maintenance required is replacing the media filter cartridge when needed - before each heating or cooling season or at least once a year, depending on conditions.

MAIC MEDIA AIR CLEANERS

PART NO.	MAX CAPACITY	TYPE	POWER INPUT
MAIC0014A	1400 CFM	MEDIA	NONE
MAIC0020A	2000 CFM	MEDIA	NONE

FLIC REPLACEMENT FILTERS

PART NO.	DIMENSIONS		
	W	H	L
FLIC0014A	5"	20"	20"
FLIC0020A	5"	20"	25"

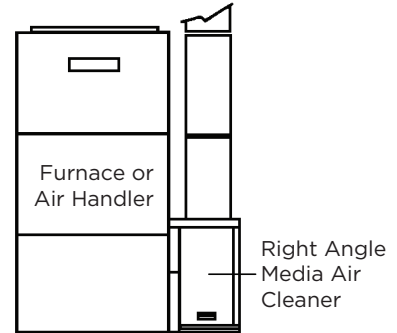
MODEL NO.	MAIC0014A	MAIC0020A
AIR FLOW (CFM) RANGE	600-1600	600-2000
DIMENSIONS		
A	7 1/8"	7 1/8"
B	24 7/8"	24 7/8"
C	16 3/8"	20 3/8"
D	9/16"	9/16"
DUCT OPENING		
E	22 1/2"	22 1/2"
F	13 7/8"	17 7/8"
FILTER CARTRIDGE REPLACEMENT	6-12 months between changes UL class 2	

MAIC Series Filters include a packet with logos for the ICP brands.

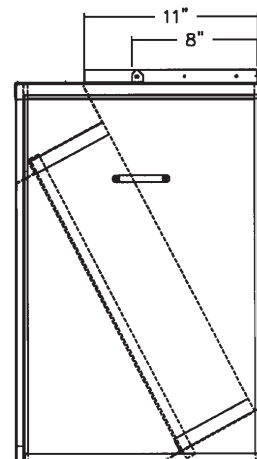
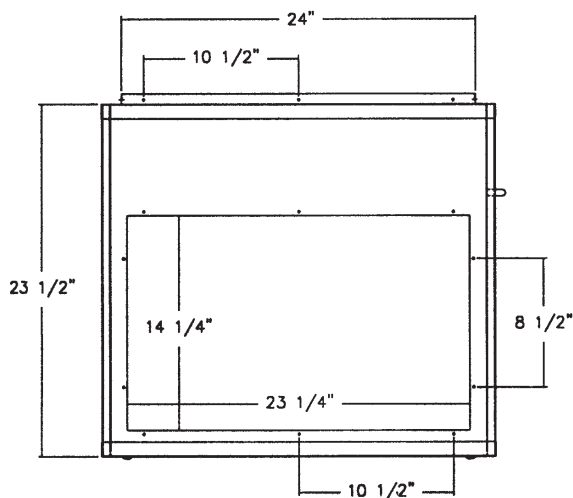
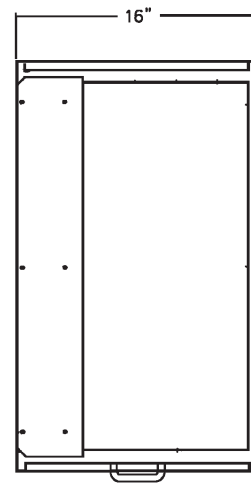
HIGH EFFICIENCY RIGHT ANGLE MEDIA AIR CLEANER

The Air Cleaner is adaptable to most High-Boy residential forced air furnaces or cooling systems. The Air Cleaner must be installed in the return air duct next to the blower compartment. This location provides even air flow across the filter and allows the Air Cleaner to keep the system motor and fan clean.

*MERV: Minimum Efficiency Reporting Value. Based on ASHRAE Standard 52.2.



MODEL NO.	FPRAM2000
POWER CONSUMPTION	0
HOUSE SIZE	n/a
AIR FLOW	Up to 2000 cfm
DIMENSIONS (W x D x H)	16 x 26.75 x 23.5 in
ADJUSTABLE INLET (3 SIZES)	8 x 24 in / 10 x 24 in / 11 x 24 in
OUTLET (D x H)	23.25 x 14.25 in
WEIGHT	34 lbs
MERV RATING	11



ELECTRONIC AIR CLEANERS

This duct mounted electronic air cleaner is available in 1400 and 2000 CFM models. EAIC comes in 2 sizes (120-v) to meet your furnace needs. Designed to remove airborne particles down to 0.01 microns in size, the EAIC effectively removes such particles as dust, dirt, lint, and pollen from your customer's home.

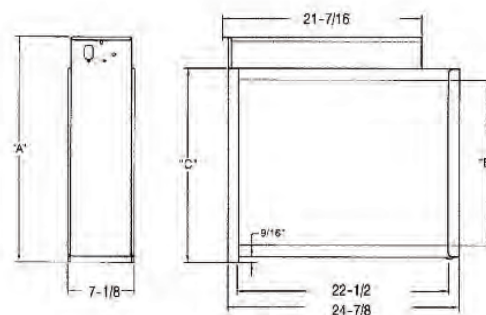
The electronic components of the Model EAIC convert the 120-v power supply to a 6200VDC that imparts an electrical charge to airborne particles such as smoke, bacteria, pollen, and dust. This charge causes these particles to attach themselves to the charged collecting plates, thus cleaning the airstream.

The resulting high cleaning efficiency enables the EAIC to also trap the smoke and extremely fine dust particles (from 0.01 to 5 microns in size) that are not removed by an ordinary throw-away-type filter. These ultrafine particles are the cause of most of the soil (smudging) of walls, draperies, curtains, etc.

The Model EAIC is designed to adapt to various types of return-air duct systems and can be mounted in either a vertical or horizontal position.

FEATURES:

- **COMPACT:** Two cabinet sizes meet most application requirements.
- **FULLY ASSEMBLED:** EAIC unit is fully assembled and ready for installation.
- **LOW OPERATING COST:** The monthly cost of operating these electronic air cleaners is less than that for a 60-watt bulb.
- **VERSATILITY:** Airflow direction can be reversed by simply reversing the prefilter and cell assemblies within the cabinet.
- **EASILY CLEANED:** Soak and rinse cells; vacuum prefilters.
- **APPLICATION:** Unit can be installed in a horizontal or vertical position, which makes it equally adaptable to basement, horizontal, downflow, or standard upflow.
- **SOLID STATE POWER SUPPLY:** Power supply is a highly reliable state-of-the-art, solid-state, high-voltage device.
- **DURABLE CABINET:** Heavy gage steel cabinet supports up to 400 lb when installed beneath an upflow furnace.
- **AGENCY LISTED:** Model EAIC Electronic Air Cleaner is UL and cUL listed.
- **LIMITED WARRANTY:** Five year Limited Warranty.



PART NO.	DIMENSIONS		
	A	B	C
EAIC1014A	20 1/4"	13 7/8"	16 15/16"
EAIC1020A	24 1/4"	17 7/8"	20 15/16"

PART NO.	MAX CAPACITY	TYPE	POWER INPUT
EAIC1014B	1400 CFM	IONIZATION	120 Volt
EAIC1020B	2000 CFM	IONIZATION	120 Volt

EAIC Series Filters include a packet with logos for the ICP brands.

FAN AND BYPASS HUMIDIFIERS



As warm air passes through the humidifier pad and water flows through it, natural evaporation takes place. This creates comforting humidity which is distributed throughout the house by your forced air heating system.

OPTIMAL GENERATION OF COMFORTING MOISTURE.

Working together, water solenoid valve, water metering orifice, water distribution tray and aluminum humidifier pad efficiently generate maximum levels of comforting moisture.

SIMPLE, INFREQUENT MAINTENANCE.

Designed for easy serviceability. In most instances, it takes less than 1/2 hour since maintenance (including changing the humidifier pad) is performed once a season. Unlike portables, there are no reservoirs which need to be frequently cleaned and refilled.

LONG LASTING HIGH QUALITY COMPONENTS.

With proper maintenance, your humidifier will last for many years. That's because it's designed with durable UV and corrosion resistant plastic. This plastic resists deterioration even when exposed to Ultraviolet light sources common in many systems today.

THREE HUMIDITY CONTROL OPTIONS.

Choose between 3 separate control options; the humidistat, the HumidiTrac and the Thermidistat control. Each option provides precise control of humidity levels in your home.

QUIET OPERATION.

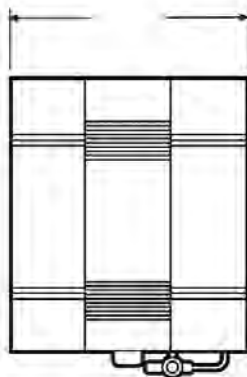
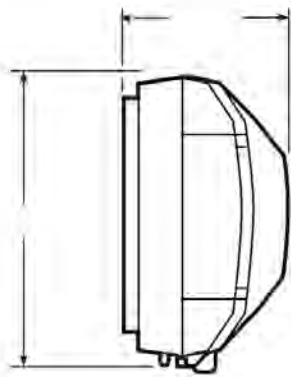
Nearly silent operation is the result of ICP Branded Humidifier's precision engineered fan and motor combination in the large fan powered unit. In all units, air is quietly drawn through the humidifier pad which efficiently turns water into water vapor to humidify your home.

WARRANTY.

Electrical components are covered by a five-year limited warranty and the entire unit is backed by a one-year limited warranty.

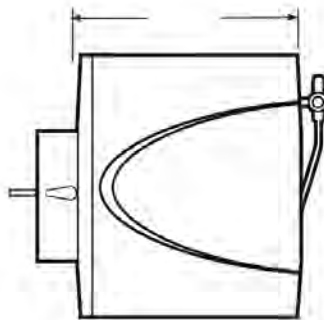
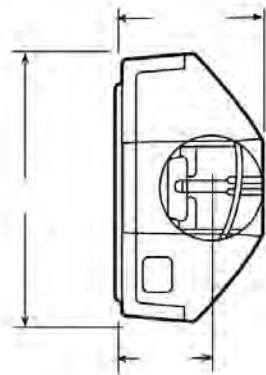
HMIC Series Humidifiers include a packet with logos for the ICP brands.

FAN AND BYPASS HUMIDIFIERS



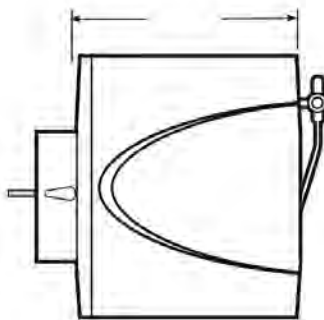
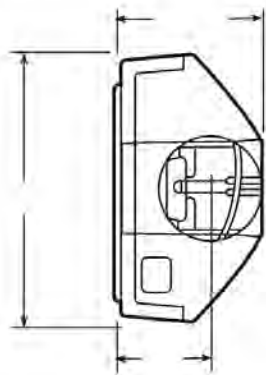
Model: HMICLF18B

Duct Cut Out Size: 14-3/4"W x 14-5/16"H



Model: HMICLB17B

Duct Cut Out Size: 9-7/8"W x 12-5/8"H



Model: HMICSB12B

Duct Cut Out Size: 9-1/2"W x 9-1/2"H

FAN AND BYPASS HUMIDIFIERS

HUMIDIFIER	Model HMICLF18B	Model HMICLB17B	Model HMICSB12B
GALLONS PER DAY**	18 GPD**	17 GPD**	12 GPD**
WATER FEED RATE	6 gal/hr	3 gal/hr	3 gal/hr
TYPE			
AIRFLOW	Fan	Bypass	Bypass
WATERFLOW	Drain Through	Drain Through	Drain Through
GENERAL			
EVAPORATOR PAD REPLACEMENT	3542RP	3542RP	1042RP
EVAPORATOR PAD SIZE H X W X D (IN.)	13 x 10 x 1-11/16	13 x 10 x 1-11/16	9-7/8 x 9-5/8 x 1-11/16
PAD ACCESS	Quick Release Cover	Quick Release Cover	Quick Release Cover
UNIT SIZE INCLUDES SOLENOID VALVE H X W X D (IN.)	15-15/16 x 15-7/8 x 10-3/8	15-1/2 x 13-1/8 x 9-1/8	12-3/4 x 12-3/4 x 9-1/8
WEIGHT	15.7 lbs.	8.3 lbs.	7.4 lbs.
TRANSFORMER	Class 2, 10VA (Included)	Class 2, 10VA (Included)	Class 2, 10VA (Included)
WATER USAGE	6 gal/hr	3 gal/hr	3 gal/hr
ELECTRICAL CONTROL LOW VOLTAGE TERMINALS			
VOLTS	24V - 60Hz	24V - 60Hz	24V - 60Hz
AMPS. (MAX)	0.5	0.5	0.5
VA (MAX)	12	12	12
WATTS	6	6	6
HIGH VOLTAGE CORD			
VOLTS	115V - 1ph - 60Hz	n/a	n/a
AMPS. (MAX)	10 amp rating	n/a	n/a
CONNECTIONS			
WATER INLET	1/4 inch copper tubing	1/4 inch copper tubing	1/4 inch copper tubing
WATER DRAIN	1/2 inch I.D. plastic hose	1/2 inch I.D. plastic hose	1/2 inch I.D. plastic hose
BYPASS OPENING	n/a	6 inch round elbow or straight	6 inch round elbow or straight
DUCT OPENING W X H (IN.)	14-3/4 x 14-5/16	9-7/8 x 12-5/8	9-1/2 x 9-1/2
STANDARD EQUIPMENT			
WATER VALVE	Solenoid, 24 VAC	Solenoid, 24 VAC	Solenoid, 24 VAC
MOTOR* THERMAL PROTECTION	120 VAC	n/a	n/a
RELAY DPDT	24 VAC	n/a	n/a
HUMIDISTAT	24 V	24 V	24 V
SADDLE VALVE	Standard	Standard	Standard
DAMPER	n/a	Built-in, 6 inch round	Built-in, 6 inch round
TEMPLATE	Installation Template Included	Installation Template Included	Installation Template Included
ACCESSORIES			
HUMIDITRAC AUTOMATIC CONTROL	5642RP	5642RP	5642RP
CURRENT SENSING RELAY	5042RP	5042RP	5042RP

* 14mHP (0.014H = 1/70 HP) ** Based on 120°F plenum temperature, 71.5°F water temperature

HMIC Series Humidifiers include a packet with logos for the ICP brands.



